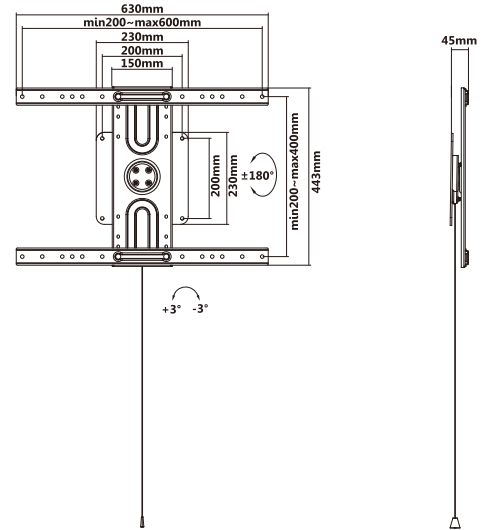
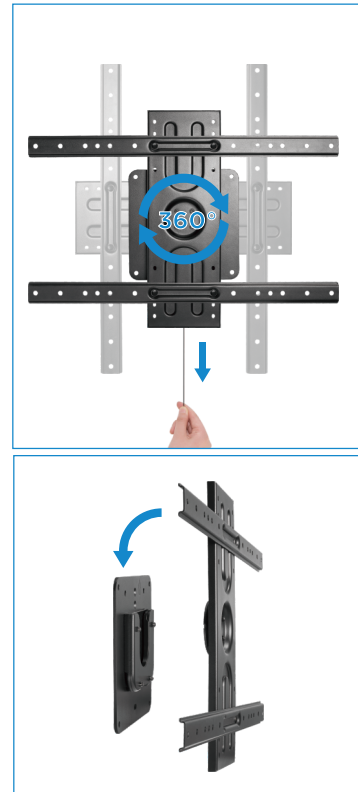
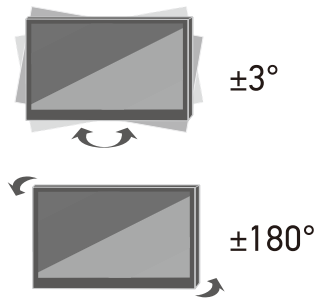
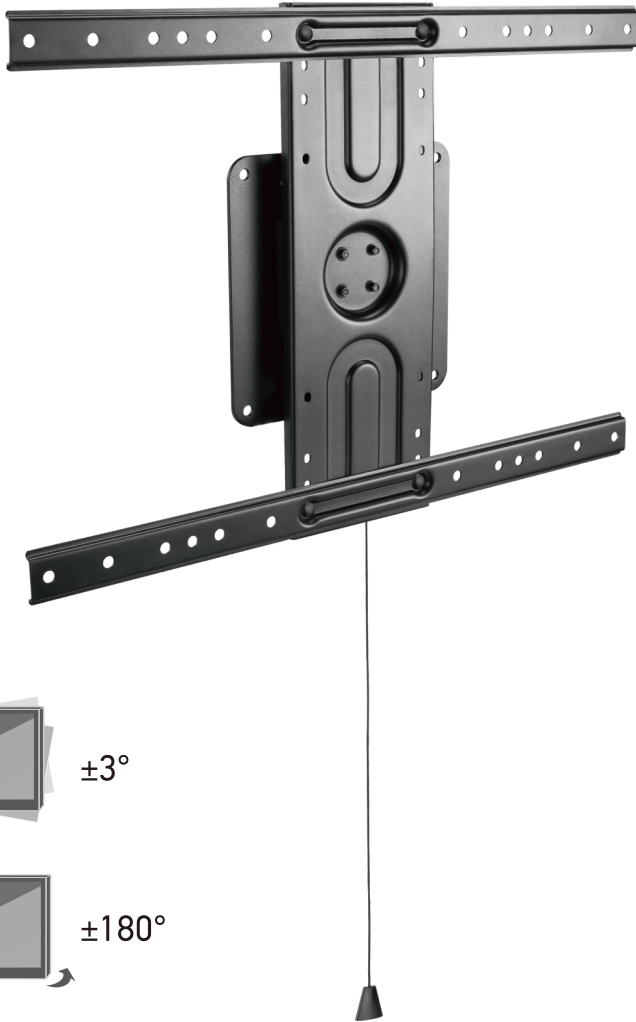


QP69-46F [FIXED] [MOST 40"-80" Screen Size] [50kg/110lbs] [45mm] [Four Times Strength Tested] [Direction Indicator] [Curved TV] [VESA Compatible] [200x200 300x200 300x300 350x350 400x200 400x300 400x400 400x600 600x400] [RoHS]



Q-Tee offers the most comprehensive range of brackets and mounts for LED / LCD / OLED and Plasma Displays. Our products are engineered to the highest quality and designed to fit VESA and Non-VESA standards to make installations quick and easy. Regardless of the application, Q-Tee has the solution to suit your requirements for both domestic and commercial applications.

Q-Tee is a registered trademark of 'Quantum Sphere Pty Ltd, PO Box 6077, Dural, NSW 2158, Australia

www.qsphere.com.au